



PIGMENTS®
TECHNICAL GUIDE

m
PATRICE MULATO

french sustainable haircare

INTENSIFY, ENHANCE OR MODIFY THE HAIR COLOUR

Mulato Pigments® do not change the structure of hair. The colour remains on the surface, protecting the hair fibre. This also means that the roots are not visible. They work either on natural hair or hair which is already coloured or highlighted and the colour lasts an average of 4 weeks.



98%*

INGREDIENTS
OF NATURAL
ORIGIN

NO PARABEN
NO SILICONE
NO HYDROGEN PEROXIDE
NO AMMONIA



NATURAL ACTIVE INGREDIENTS

Organic shea butter

Its soft and silky consistency hydrates and protects against dry hair. It prevents the hair fibre from ageing



Mica

A mineral that adds shine



Sunflower oil

Rich in vitamins E and F



Beta-carotene



Blackberry extracts



Cherry extracts



Professional and effective

- Colour highlights for 4 weeks
- Excellent coverage
- Intense shine
- No visible roots
- No damage to the hair's scales

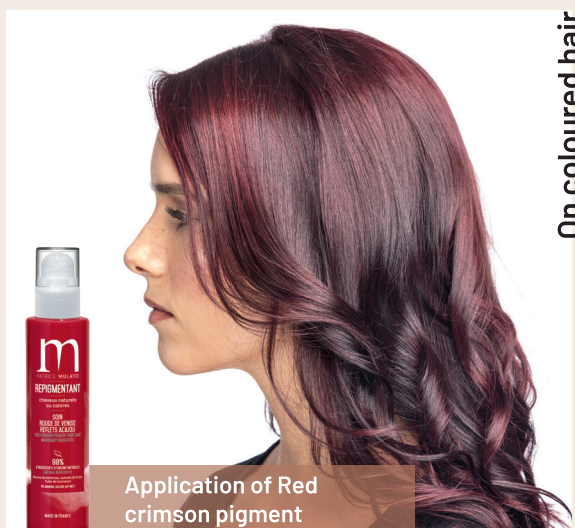
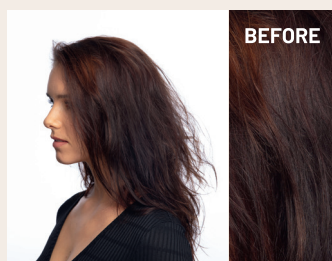
Natural ingredients

- Between 92% and 98% natural ingredients
- 97% biodegradable ingredients
- With shea butter
- With fruit extracts
- No ammonia
- No hydrogen peroxide
- No resorcin
- No paraben
- No silicone

EFFECTIVENESS OF PIGMENTS® IN IMAGES



Find images of all our pigment tests on our website
www.patricemulato.com Images section, or flash this code >



11 COLOURS FOR 10 SHAMPOOS AND 11 HAIR CARE PRODUCTS

A complete
range of
11 colours
available in
3 sizes



PROFESSIONAL
FORMAT



200 ML
Resale
format



50 ML
Ideal to test
and take with
you on a trip

WARM HIGHLIGHTS



RED CRIMSON
= RED

Adds mahogany and
auburn highlights



BURNT SIENNA
= COPPER

Adds copper highlights



NATURAL OMBRE
= WARM CHESTNUT
BROWN

Adds chocolate brown
highlights



STRAWBERRY BLONDE
= GOLD AND COOPER

Adds glossy chestnut
brown highlights



WINE LEES
= PURPLE RED

Adds purple red
highlights

COOL HIGHLIGHTS



CHARCOAL BLACK = BLACK

Adds black highlights.
Can be used on salt
and pepper hair for a
steel grey colour



ROYAL PURPLE = ADDS PURPLE HIGHLIGHTS

Only on coloured hair



COOL CHESTNUT BROWN = COOL BROWN

Adds cool chestnut
brown highlights

HIGHLIGHTS NEUTRALISING GLOSS



BLUE = BLUE

Neutralises unwanted
yellow highlights to
obtain a cool polar
blonde



ASH BLONDE = IRIDESCENT

Neutralises and
corrects unwanted
orange highlights

Can be used in mixture
with the Havana Ochre
cream hair care




HAVANA OCHRE = VANILLA BLONDE

Bleached or highlighted hair
- To pastelize or reduce a reflection
- Can be mixed with all the shades

All shades can be combined with one another.

COLOUR CHART

										
Tone height →	1	2	3	4	5	6	7	8	9	10
Pigment shade ↘	Black	Brown	Dark chestnut	Chestnut	Light chestnut	Dark blonde	Blonde	Light blonde	Very light blonde	Very very light blonde
Red crimson	●	●	●	●	●	●				
Strawberry blonde						●	●	●	●	
Cool chestnut brown				●	●	●	●			
Burnt sienna				●	●	●	●	●		
Havana ochre						●	●	●	●	●
Royal purple			●	●	●					
Natural ombre				●	●	●	●			
Blue							●	●	●	●
Charcoal black	●	●	●							
Ash blonde	●	●	●	●	●	●	●	●	●	●
Wine lees			●	●	●	●				



- On natural hair, it adds shine and slight highlights
- As a pre-pigment, it prepares the hair for the Pigment hair care (for more intense highlights and longer-lasting colour)

- Select the Pigment shampoo according to the desired highlights
- Apply to wet hair and work into a lather. Leave for 3 to 5 minutes, then rinse



- Q On natural hair, it adds highlights without a long-lasting change to the natural colour
- Q On coloured hair, it revives the colour which will then last longer
- Q Used as a pre-pigment
- Q Used to lift the colour
- Q Used to pull the colour to the tips
- Q No root effect (no oxidant)

Tips for applying the pigment hair care

On natural hair

- After applying the shampoo, use the Pigment hair care with a brush or a sponge
- Leave for 10 to 20 minutes - except for the Blue Planet and Ash blonde for 5 minutes - (depending on the desired intensity)
- Rinse thoroughly

(!) For strong colours, apply 1 cm from the root to avoid colouring the scalp

For strong colours, using gloves is recommended

For sensitised hair, first test on a lock of hair

On coloured hair

As a colour maintenance or between 2 visits to the hairdresser's

- Apply the appropriate Pigment hair care with a brush or a sponge. Leave for 5 to 10 minutes (depending on the desired intensity). Rinse thoroughly

Colouring the lengths and tips

- Apply the dye to the roots
- Pull the colour over the lengths and to the tips with the chosen Pigment hair care (leave for a few minutes, as per instructions)

Boosting highlights

- Mix a few pump presses of Pigment suited to the existing colour (only for warm highlights)

Pre-pigmenting

- Apply the chosen hair care according to the desired highlight (according to the colour chart), do not rinse. Apply the colour

Gloss

- On highlighted, lightened or bleached hair, apply the chosen Pigment hair care, then, leave for 3 to 5 minutes



Scan the QR code
to view the tutorial



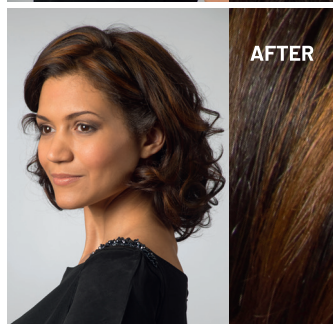
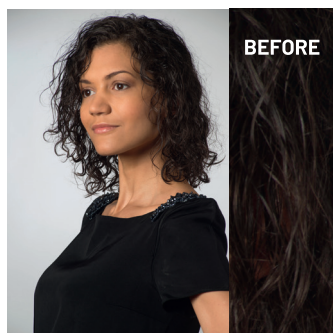
Colourist tip

For more intense highlights, wrap the hair in cellophane

Balayage, ombre, tie and dye, highlights

With all types of bleaching powder: 10, 20, 30 or 40 volume developers, depending on the degree of bleaching desired

- Put 1 dose of bleaching powder + 2 doses of peroxide cream in a bowl
- Mix thoroughly for an even blend
- Add between 5 and 10 pumps of Pigment
- Application: balayage (freehand) or aluminium paper (foil)
- Application time: depends on the degree of bleaching desired



Add 5 presses of Natural Ombre Pigment hair care to 10 volumes.

DETOX HAIR **SCRUB** HAIR PREPARATION **BEFORE** **PIGMENTATION OR COLOURING**

The first
action of the
colourist,
the hair
expert



4 targeted actions for clean, bouncy and shiny hair

- ☞ Gently exfoliates the hair fibre
- ☞ Removes product residues (gel, pollution, silicone...) accumulated on the hair
- ☞ Removes incompatible highlights and colour overloads (darker hair) without lightening the natural colour
- ☞ Better hair care penetration

White Clay

Detoxifying properties

Eliminates the impurities, colouring residues and toxins that accumulate in your hair.

Rich in mineral salts.

Remineralises your scalp.



Apricot kernel and AHA fruit acids powder

Natural deep exfoliation of the hair fibre, without damaging it
Strengthens the effects of the white clay.



Acacia collagen and glycerine

Filmogenic and hydrating agents

Form a protective film around the hair shafts.

Maintains hydration.



USER GUIDE



HAIR DIAGNOSTIC



GOAL



HOW USE



DEVELOPMENT TIME

For damaged hair or hair that is suffocated by chemical products

Eliminate the residue that accumulates in your hair. Prepare for treatment

On damp unwashed hair, apply the hair care to each section with your hands or a brush.

Make sure the hair care is applied to the full length of hair, from root to tips. It is best to start at the nape of the neck.

10 min

with or
without
heat.

Slight excess of colour

Soften incompatible highlights and remove excess pigments from your hair without lightening it

On damp unwashed hair, apply the hair care to each section with your hands or a brush.

Make sure the hair care is applied to the full length of hair, from root to tips. It is best to start at the nape of the neck.

10 min

with or
without
heat.

Noticeable excess of colour, dark overlay

Soften the pigment to prepare your hair for a new colouring or the application of a treatment

Take a bowl and mix 2/3 hair scrub with 1/3 peroxide (10 or 20 volume developers, depending on the colour load).

Apply the treatment, section by section, with a brush. Make sure the treatment is applied to the full length of hair

20 min

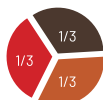
with or
without
heat.

CREATE ENDLESS HIGHLIGHT COMBINATIONS

BY MIXING THE PIGMENTS

All shades can be combined with one another.
All of these combinations are given as an example.

The quantities below are for a 100 g mixture.
g = grams of ingredients in a 100 ml container



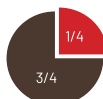
34 g
Natural
ombre



33 g
Red
crimson



33 g
Burnt
sienna



75 g
Natural
ombre



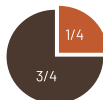
25 g
Red
crimson



50 g
Natural
ombre



50 g
Burnt
sienna



75 g
Natural
ombre



25 g
Burnt
sienna



50 g
Natural
ombre



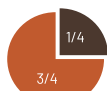
50 g
Charcoal
black



50 g
Burnt
sienna



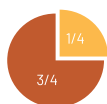
50 g
Charcoal
black



75 g
Burnt
sienna



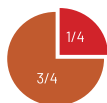
25 g
Natural
ombre



75 g
Burnt
sienna



25 g
Havana
ochre



75 g
Burnt
sienna



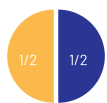
25 g
Red
crimson



50 g
Burnt
sienna



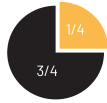
50 g
Havana
ochre



50 g
Havana
ochre



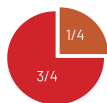
50 g
Blue



75 g
Ash blonde



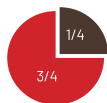
25 g
Havana
ochre



75 g
Red
crimson



25 g
Burnt
sienna



75 g
Red
crimson



25 g
Natural
ombre

REVEAL YOUR TALENT AS A **COLOURIST** WITH PERSONALISED **M'COLOR PIGMENTS**

Customise the colour for resale

1. Prepare your mix according to your customers' wishes
2. Use the 100 ml "Pigment shampoo" bottle or the 100 ml "Pigment hair care" jar
3. For the 100 ml "Pigment shampoo" bottle: screw the cap tightly and shake well



You may add your logo to the bottles and jars for an order with a minimum number of items
For any information: contact@mulato-cosmetics.fr

A **PIGMENT BAR** TO STORE YOUR PIGMENTS AND PREPARE YOUR MIXES

Products are easier to use

Small table for preparing the mixes
Easy-access storage area for bottles
in use
Product storage within easy reach

Promotes your natural offer

Its design and signature grab the
attention of your customers and
introduce your Natural orientation

Fits all types of salons

Ergonomic, on casters
Compact



Order conditions:
contact@mulato-cosmetics.fr

FOR A NATURAL BEAUTY

A committed brand with a single objective: Naturalness

With an average of 97% ingredients of natural origin, we draw the best natural active ingredients from Nature to create formulations that respect the hair, the hands that style them and the planet.

FOR AN ECO-RESPONSIBLE BEAUTY

All bottles are 100% recyclable

By 2022, all of our bottles will be 100% recycled from domestic plastic waste.

Our products contain on average 95% biodegradable ingredients.

FOR GENUINE ETHICAL BEAUTY

The products are guaranteed free from paraben, silicone, resorcin, ammonia, peroxide and PEG.

The last 3% of non-natural ingredients are needed to guarantee the stability and harmlessness of our products: preservatives and pH correctors.

FOR FAIR BEAUTY

With its special historical relationship with the ADAPEI du Rhône, most of our products are packaged in an ESAT, an association aiming at the social and professional integration of disabled adults.

FOR EFFECTIVE PROVEN PROFESSIONAL BEAUTY

Following their development by our partner laboratories, all our products are tested and approved by professional hairdressers, in real conditions, in their salons.

TESTED AND APPROVED PROFESSIONAL EFFECTIVENESS

97%*

**NATURAL
ORIGIN
INGREDIENTS**



NO PARABEN
NO SILICONE
NO HYDROGEN PEROXYDE
NO AMMONIA



**MADE IN
FRANCE**

For any technical
questions,
please contact us on
+33 (0)4 78 61 38 45

m

PATRICE MULATO

french sustainable haircare



On facebook
MULATO COSMETICS



On Instagram
patricemulato

Read more about our commitments on www.patricemulato.com



3

06RE-01-15628 *Average calculated on all Patrice Mulato products in January 2020.